



AVX24-4 MEDIA HUB

The Easiest Way to Manage Your IP Media Workflow

A Solution to See, Control, Trust Your AV Network



Visualized Network & Device Management



Centralized Control Across Multiple Studios



Intelligent Diagnostics & Fault Detection



Reliable, Broadcast-Grade Performance



Seamless NDI Routing & Stream Control



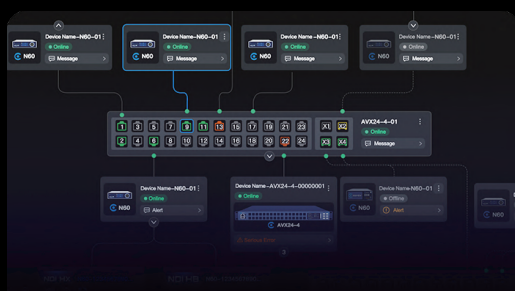
AVX24-4 Media HUB, Kiloview's next-generation IP media management platform, is designed to simplify, visualize, and elevate AV-over-IP workflows. It integrates visualized network management, intelligent diagnostics, NDI-optimized media routing, and centralized device control into one compact system.

With a pre-configured, optimized network architecture supporting DHCP, IGMP Snooping, QoS, VLANs, and other AV network strategies, AVX24-4 Media HUB ensures stable, low-latency, broadcast-grade operation with seamless NDI routing and PTP synchronization. Its intelligent diagnostics and real-time monitoring provide instant network health visibility, while intuitive controls and KiloLink Server integration enable efficient management of large-scale operation. Robust hardware, redundant power, and advanced cooling guarantee continuous, reliable operation.

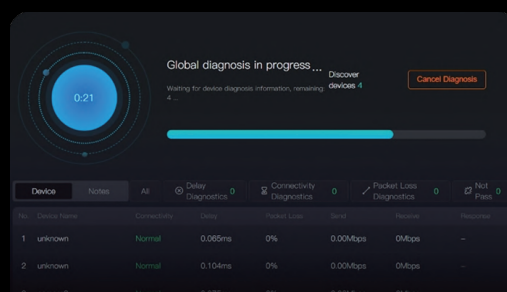
By turning complex IP AV infrastructures into simple, efficient, and visualized workflows, AVX24-4 Media HUB bridges IT complexity and AV operation, enabling studios, production centers, and enterprise environments to efficiently manage professional IP media networks.

Take Full Control of Your AV Workflow

Software & Network Management for Smooth, Centralized Operations



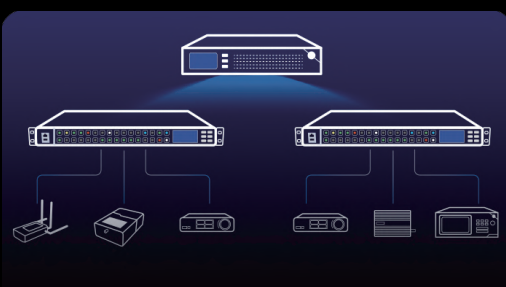
Visualized Network Topology: See, manage, and monitor your entire AV network with an intuitive, customizable map. Zoom in/out on single or multi-unit layouts, view device connections and port status instantly, and spot issues quickly with color-coded alerts.



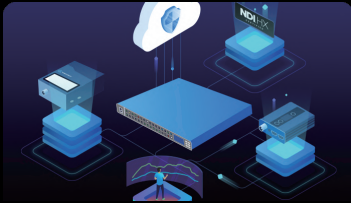
Intelligent Diagnostics & Monitoring: Quickly analyze and monitor your AV network with one-click, global, or single-device diagnostics. Continuous SNMP-based monitoring tracks link status, latency, and throughput, while visual alerts highlight issues for uninterrupted performance.



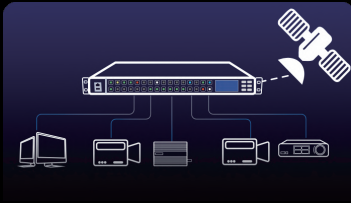
Seamless NDI Routing & Stream Control: Broadcast-grade, low-latency NDI routing with QoS priority for critical streams. Drag-and-drop matrix switching and intuitive presets make complex workflows simple and repeatable.



Scale with KiloLink Server: Easily expand your AV network by connecting multiple AVX units. Combined with KiloLink Server, view all devices in a single, centralized topology for intuitive, efficient, and fully controlled large-scale operations.



Centralized Device Management: Automatically discover *KDDs-enabled and supported third-party devices. Manage multiple units from a single interface, with remote reboot, rename, and configuration.



Precise Time Syncnization: IEEE 1588-PTP provides sub-microsecond sync across all devices via AVX24-4 Media HUB. Multi-camera and multi-source workflows stay perfectly aligned for smooth, broadcast-ready AV.

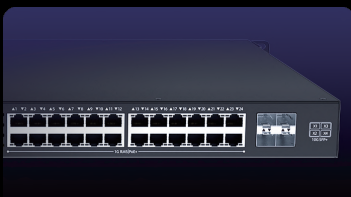


Secure Multi-User Access: Role-based permissions and customizable access policies protect critical systems while enabling smooth, efficient collaboration across multiple users.

** KDDs (Kiloview Device Discovery Service) is Kiloview's proprietary protocol for automatic device discovery, real-time monitoring, and remote control.*

Reliable Performance You Can Count On

Hardware & Switching Foundation for Continuous, High-Density AV Operations



High-Performance AV Switching: 24xGigabit PoE + 4x10G SFP+ uplinks, 226 Gbps total switching capacity. Pre-configured for AV workflows to ensure smooth, loss-free media delivery in high-density scenarios.



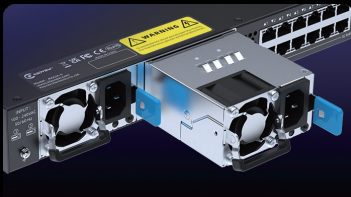
Advanced Network Foundation: Supports DHCP, VLANs, IGMP Snooping, and high-capacity MAC tables, providing reliable aggregation and professional AV network performance.



FPGA-Enhanced Processing: Reconfigurable FPGA chip handles critical tasks in parallel with microsecond-level latency, supporting specialized functions like video encoding.



Robust Hardware & Cooling: Equipped with 41 metal heatsinks and active cooling, ensuring stable operation even under heavy workloads.



Redundant Power Supply: Dual 920W hot-swappable power supplies guarantee uninterrupted 24/7 operation.



Intuitive Physical Control Panel: Built-in 22" high-resolution LCD and 32 customizable buttons allow fast, direct operation without a PC.

Why You Need AVX24-4 Media HUB

As AV networks expand, device management becomes increasingly complex. Connections multiply, troubleshooting is time-consuming, and maintaining consistent performance across multiple sites is challenging. The gap between AV and IT expertise creates inefficiencies, bandwidth bottlenecks, and operational risks.



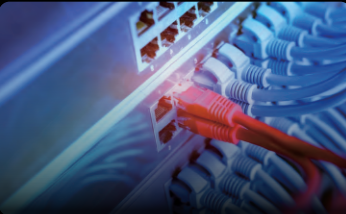
Confusing Device Management & Difficult Fault Diagnosis



Multi-Site Device Coordination & Configuration Inconsistency



Complex Technology for AV / IT Collaboration



Bandwidth Imbalance & Transmission Lag with Multiple Devices



Equipment Failures & Business Interruptions



Poor Network Visibility & Limited Fault Pre-Warning

AVX24-4 Media HUB solves these challenges by simplifying complex AV networks into visual, centralized, and reliable workflows—enabling efficient device management, stream control, and network monitoring all in a user-friendly, cost-effective platform.

With AVX24-4 Media HUB you can:



SEE your network clearly with intuitive topology visualization.

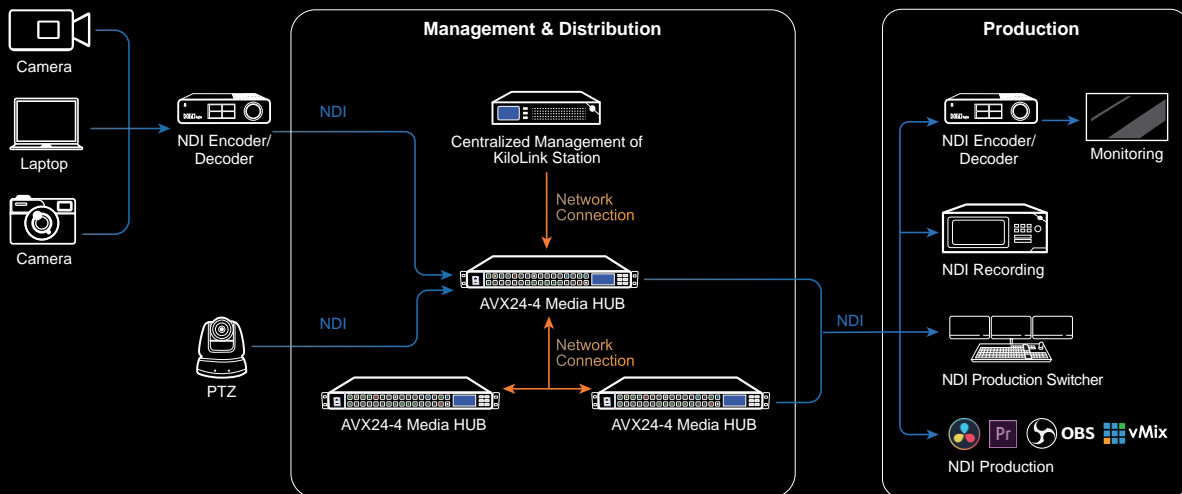


CONTROL your AV streams confidently with seamless switching and routing.



TRUST your system with reliable NDI transmission, PTP synchronization, and hardware-level monitoring.

Application



Live Studio Production



Corporate Meetings



Remote Classroom



Sports Events

AVX24-4 Tech Specs

Product Name	AVX24-4 Media HUB
Model	AVX24-4
Display	498x280 (16:9) LCD Screen
Function Keys	6 standard keys (Up, Down, Confirm, Back, Home, Lock)
	32 visual & editable crystal buttons
Interfaces	1x USB 3.0 Type-C
	1x USB 3.0 Type-A
	1x 3.5mm headphone out
	1x RJ45 OOB (Out-of-Band management) port
	24x RJ45 Gigabit + full PoE (IEEE 802.3at ≥30W)
	4x 10G SFP+
Cooling	41 metal heatsink with active fan cooling
Power Supply	Dual redundant 920W (hot-swappable)
Management	Local console and HTTP/HTTPS web interface
MAC Address Table	32K entries (32768)
VLAN Support	4K (4096)
Packet Buffer	32MB
Switching Capacity	226Gbps
Forwarding Rate	168.14 Mpps
1588 Version	V2.1
Height	1U
Dimensions	483x388x44 mm
Weight	7640g



Please scan with browser.

Kiloview Electronics Co., Ltd.

+86-155-7666-2088 info@kiloview.com www.kiloview.com

B4-106/109, Jiahua Intelligence Valley Industrial Park, 877 Huijin Road, Yuhua District, Changsha, China

Reminder: All photoes are for reference only, and specifications are subject to the physical product.