



KILOLINK STATION

ALL-IN-ONE **HARDWARE BONDING RECEIVER &
DEVICE MANAGEMENT PLATFORM**

Subscription-Free

Broadcast-Ready

Plug & Play

Server-Free



The Definitive **Hardware Solution** for Bonded Video Reception

KiloLink Station is Kiloview's dedicated hardware for wireless bonding reception, device management, and professional IP/SDI workflows. Built with KiloLink Server Pro in a compact half-1U design, it removes the need for servers, subscriptions, and system tuning—delivering synchronized reception, flexible outputs, and simple control through a single, reliable platform. It is perfect for multi-camera field reports, educational broadcasts, and professional production workflows.

**KiloLink Station is available in Standard Edition for IP workflows and Pro Edition (4 x 3G-SDI) for broadcast production.*



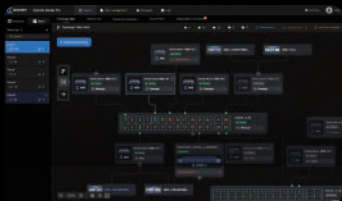
Plug & Play: Pre-configured with KiloLink Server Pro. Devices register instantly—no setup, commands, or Docker required.



8-Channel Bonding: Simultaneously receive up to 8 x P3 or P3 Mini Wireless Bonding Encoders, ensuring stable multi-network transmission.



Broadcast-Ready Sync Outputs: 4 x 3G-SDI outputs with frame-accurate sync and 1x 4K HDMI multi-view or single-mode output for flexible monitoring, perfect for studios and OB vans.



Visualized & Centralized Management: Paired with Kiloview AVX Media HUB, it can monitor device health, connectivity, and signal flow in real time, with centralized control and role-based security.



Multi-Protocol Support: Support NDI HX, SRT, RTMP, RTP/RTSP, and HLS, adapting streams for live, remote, and NDI workflows.

More Features



Local Recording & SSD



Compact Half-1U



Dual-NIC Redundancy



User-Friendly Interface



24/7 Stability



API for Easy Integration

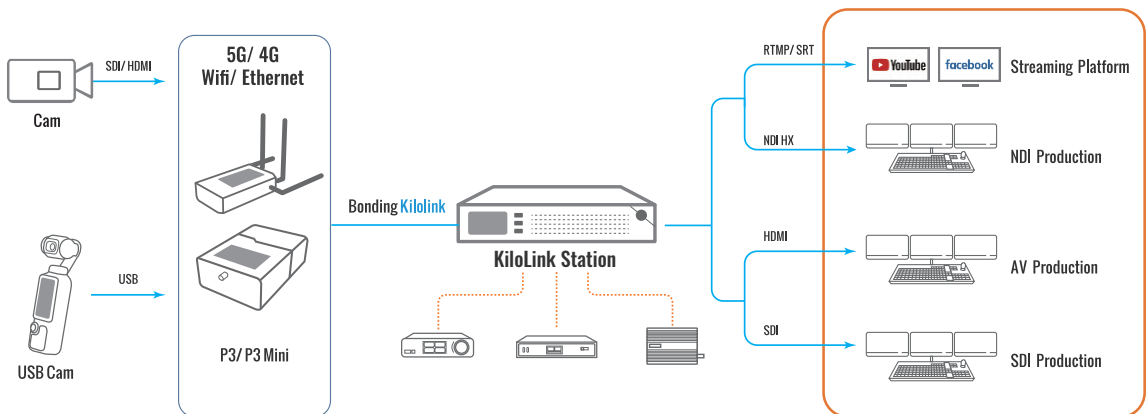


3.5mm Audio Line Out

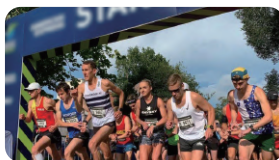


Multiview Layout

Application



Broadcast & News



Sports & Live Events



Education & Campus



Remote Production

KiloLink Station Tech Specs

Model	KiloLink Station
Memory	16GB DDR4
Storage	128GB EMMC
Streaming Protocols	NDI HX, SRT, RTMP, RTP/RTSP, and HLS
Video Decoding	H.264/H.265
Video Output	4 × 3G-SDI (Pro Edition Only): Up to 1920×1080p60 (backward compatible) 1 × 4K HDMI: Up to 3840×2160p60 (backward compatible)
Bonding Performance	Supports connection of up to 8 × P3 units simultaneously
Audio Output	1 × 3.5mm Line Out
Multiview Layout	Supports up to 4-way split screen (Quad-view)
Network	1 × 5Gbps RJ45 Ethernet 1 × 10/100/1000 Mbps RJ45 Ethernet
Power Supply	DC 12V 3A
Management	Web-based UI Management
Dimensions	220 × 231.45 × 44 mm (Compact half-1U; two units can be rack-mounted as 1U)
Weight	≈ 1780g (Standard Edition)



Please scan with browser.

Kiloview Electronics Co., Ltd.

+86-155-7666-2088

info@kiloview.com

www.kiloview.com

B4-106/109, Jiahua Intelligence Valley Industrial Park, 877 Huijin Road, Yuhua District, Changsha, China

Reminder: All photoes are for reference only, and specifications are subject to the physical product.